



# GMT MONTHLY MEMBERSHIP PROGRESS REPORT

Results as of: 2/29/2020

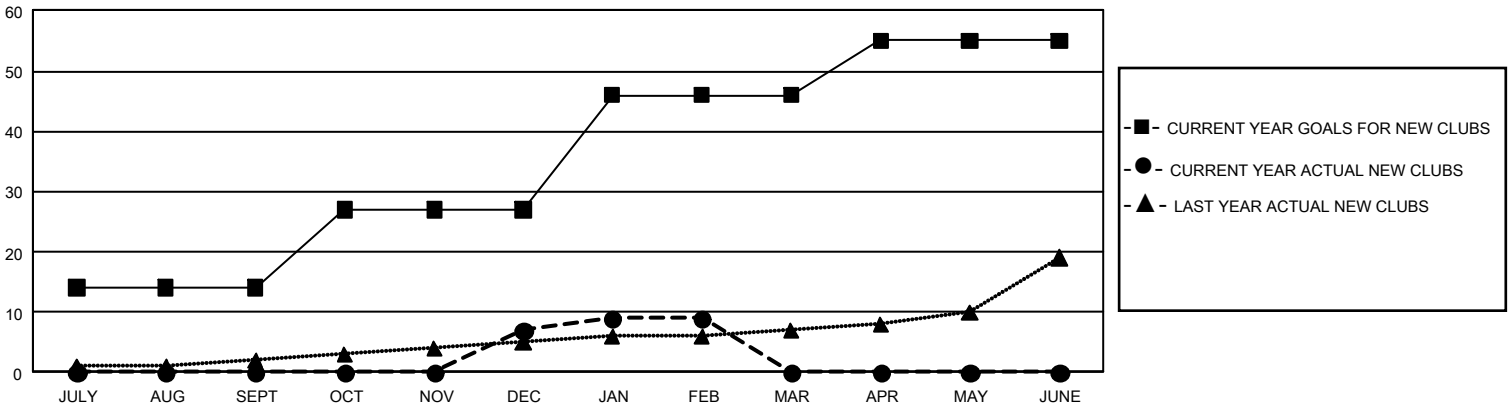
## GMT Constitutional Area 1, Group B

GMT: OPEN

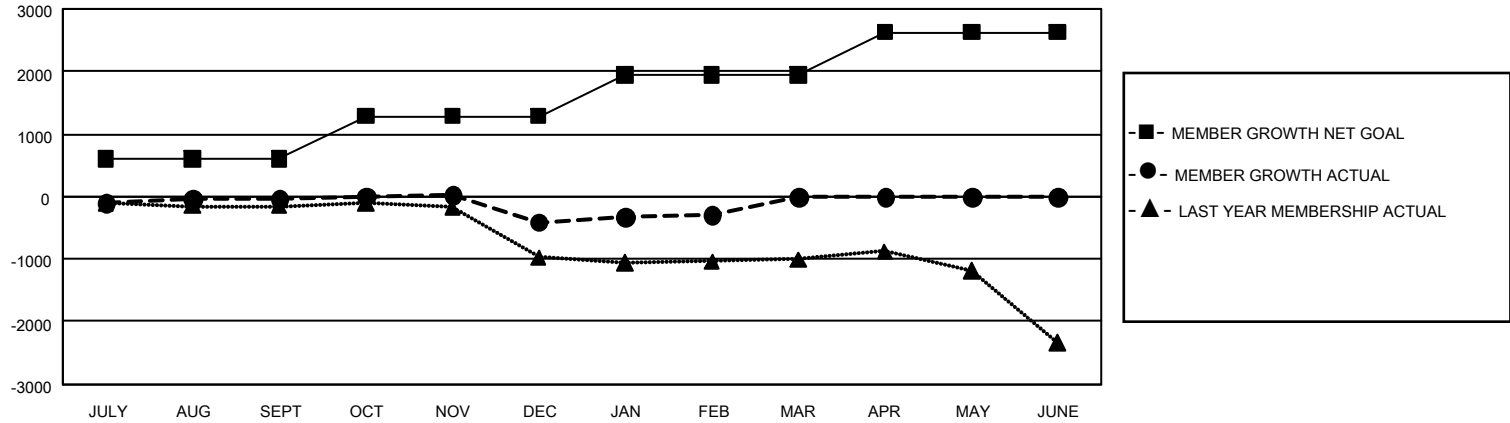
REPORT DOES NOT INCLUDE CLUBS IN UNDISTRICTED AREAS.

Clubs				Members			
RESULTS FOR 2019-2020				RESULTS FOR 2019-2020			
QUARTER	NEW CLUB GOAL	NEW CLUBS	DROPPED CLUBS	QUARTER	MEMBER GROWTH NET GOAL	MEMBER GROWTH ACTUAL	DROPPED MEMBERS ACTUAL (including transfers)
JULY/AUG/SEPT	42	0	25	JULY/AUG/SEPT	1,821	1,205	1,074
OCT/NOV/DEC	39	7	15	OCT/NOV/DEC	2,025	1,128	1,391
JAN/FEB/MAR	57	2	2	JAN/FEB/MAR	1,989	836	647
APR/MAY/JUNE	27	0	0	APR/MAY/JUNE	2,046	0	0

GOALS AND ACTUAL NEW CLUBS CUMULATIVE



GOALS AND ACTUAL MEMBERS CUMULATIVE



DROPPED CLUBS: 42	712 CLUBS OF 1,317 ADDED 1 OR MORE NEW MEMBERS	<u>GENDER DISTRIBUTION</u>	
		MALE	20,535 (61.09%)
		FEMALE	13,082 (38.91%)
<u>DROPPED MEMBERS</u>		TOTAL FAMILY UNIT MEMBERS 6,481	
DECEASED	289	FAMILY MEMBERS PAYING HALF DUES 3,371	
CLUB CANCELLED	284		
OTHER	2,538		
TOTAL	3,111		

[CLICK HERE FOR CUMULATIVE MEMBERSHIP DATA](#)